

PART OF E 1/2 SEC. 32, & W 1/2 SEC. 33, T.7N., R.2W., S.L.B. & M.

PLAIN CITY
BLOCK 18, PLAT A

TAXING UNIT: 21

SCALE 1" = 50'

SEE PAGE 43

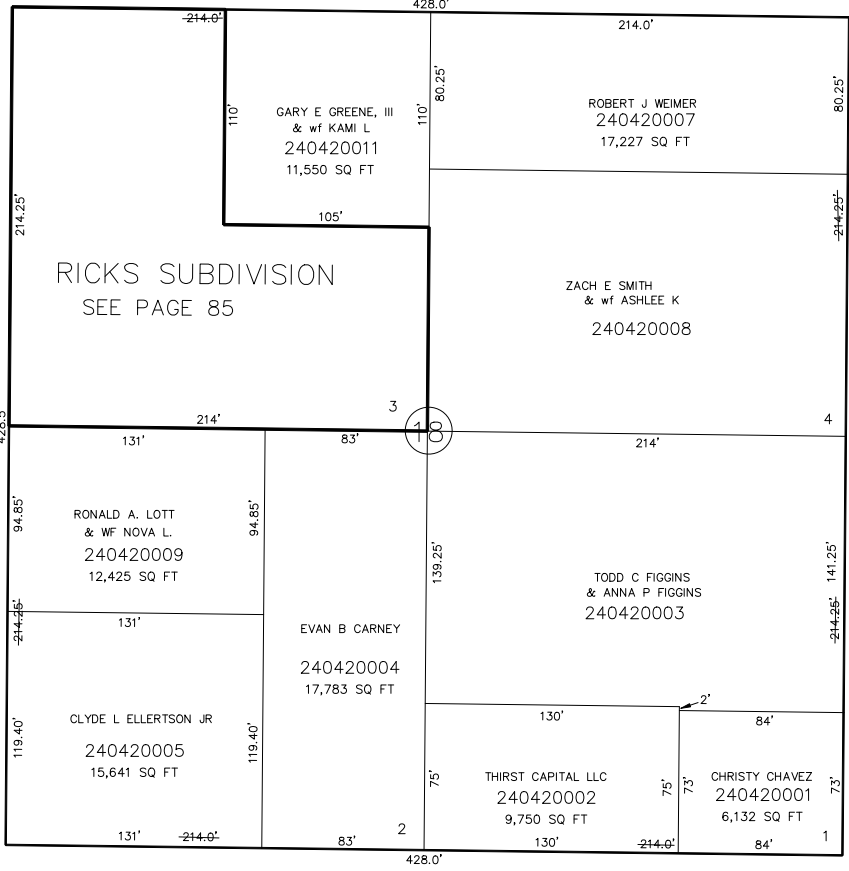
19

2650 NORTH STREET

S 89°17' E

WEST STREET

WEST STREET



RICKS SUBDIVISION
SEE PAGE 85

SEE PAGE 41

17

WEST STREET

WEST STREET

SEE PAGE 55

4350

4275

2575 NORTH STREET

13

SEE PAGE 37

SEE ORIGINAL DEDICATION
PLAT OF PLAIN CITY IN
BOOK 5, PAGE 80 OF RECORDS.